

KERN
**CANCER
RUN/WALK**
Festival AND
2026



Local Needs For
Local Patients
Hope Walks With Us

FOR REGISTRATION
www.KernCountyCancerRun.org

***AT RIVERWALK PARK**

Kern County
Cancer Foundation
Local support for local needs



Kern County Cancer Foundation

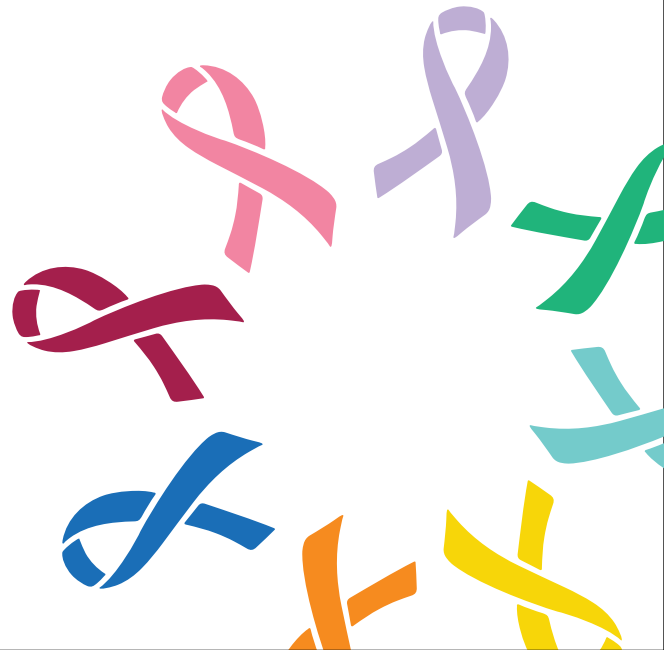
Local support for local needs

Foundation Information Our Mission

The Kern County Cancer Foundation (KCCF) is dedicated to assisting Kern County residents who need financial assistance in obtaining treatment for cancer and associated diseases. The Kern County Cancer Foundation is the largest provider of cancer support services in Kern County. We provide funding, transportation and navigation services for patients in Kern County through a collaborative partnership with local healthcare providers, community organizations and generous supporters. Since 2013, more than 2,000 patients have been assisted with direct funds, and over \$4.8 million has been distributed on their behalf. Also thousands have been assisted with transportation and navigation services.

Thank you to our generous supporters we were able to provide the following in **2026**:

- We committed **\$368,622** in financial assistance for medical bills related to local patients cancer treatment. **The average commitment is approximately \$5,000 per patient.**
- We provided 36 children with cancer **\$20,400 in gas cards equaling 408 round trips** to out of county children's hospitals through our Pediatric Mobile Angel Unit (MAU).
- The MAU also provided **69 shuttle trips** for families who did not have a safe vehicle to drive out of county
- Over **4,750 additional client services** were provided including referrals for housing assistance, transportation, insurance conversion, food assistance and more
- Close to **\$60,000 in additional medical financial assistance** was also secured for patients in need.



KERN
**CANCER
RUN/WALK**
AND
Festival
2026



September 12, 2026

You are invited to be a part of Kern County Cancer Foundation's 13th Annual Cancer 5k Run/Walk event taking place Saturday, September 12, 2026 at Riverwalk Park, 11298 Stockdale HWY, in Bakersfield from 8:00 am to 1:00 pm.

This event brings funding and awareness to the various cancer diagnosis and encourages our entire community to support local patients. We have had over 2,000 community members and survivors participate in our 5k Run/Walk in the past, let's do it again!

There are many ways you can help us reach our goals:

1. Become a sponsor —(Sponsors will receive marketing benefits and waived participant fees. Please see the last page for package details.)
2. Enter a team of 10 — Wear your company shirt while showing your support.
3. Donate a raffle item and/ or goodie bag items (subject to approval).
4. Become a vendor—Various Levels
5. Support a team member with a pledge —find a registered participant on our website.

Early registration for adults (before April 1st) starts at \$10. After March 31st it becomes \$20. Children's Registration is \$10

With early registration each participant will receive a race bib and a goodie bag. You can purchase a Run/Walk T-shirt for \$20, deadline is Aug. 30, 2026. All cancer survivors are free! Visit www.kerncountycancerrun.org to register.

In addition to the registration fee there is an opportunity for the participants to fundraise. There will be recognition for the top fundraising teams and top individual, and prizes for the top child fundraisers.

One hundred percent of the proceeds will benefit our financial assistance programs for Kern County cancer patients and their families and pediatric transportation which are funded and exist because of generous donors like you.

For more information please contact Alissa in our office at 661 -825-8249

Let the race begin!

With much enthusiasm,
The Kern Cancer Run/Walk and Festival Planning Committee





SEPT. 12TH

TIME: 8 AM- 1 PM

*AT RIVERWALK PARK

KERN
CANCER
RUN/WALK
Festival **AND**
2026

www.kerncountycancerrun.org



Kern County
Cancer Foundation
Local support for local needs

Survivors
FREE





Benefitting the Kern County Cancer Foundation
2026 Sponsorship/Group Registration/ Individual
Early Registration is before April 1, 2026



This form should be used for registration of a Group, Sponsor or Individual. If you are planning on having individuals from your group participate, a separate form must be submitted in paper or online.

Name: _____

Company Name: _____

Address: _____

City: _____ State: _____ Zip: _____

Phone: _____ E-mail: _____

- I am a Survivor What is your cancer diagnosis?
Stage/Music Sponsor (\$20,000)
5k Course Sponsor (\$10,000)
Survivor Sponsor (\$5,000)
Kid's Course Sponsor (\$2,500)
Water Station Sponsor (\$1,000)
General Sponsor (\$500)
Yard Sign Sponsor (\$250)
Message Board (\$50)
10 Person Team (\$350 before April 1st or \$450 after March 31st)
Please register us for Adult participant(s) (\$10 each before April 1st and \$20 each after March 31st)
Please register us for Child participant(s) (\$10 each ages 3-11)
I am unable to attend but I would like to make a donation of \$
Vendor Booth (\$100 Small Business/Non-Profit \$200 Business \$300 for Corporation)
T-Shirt \$20.00 deadline 8/30/2026

PLEASE CHOOSE ONE OF THE FOLLOWING:

- We will be participating as team. Team Name
We will not be participating as team but our sponsorship should be counted towards the following Team:
We will not be participating as a team and our funds are not designated to any specific team.

PAYMENT INFORMATION:

Enclosed is my check for \$ (PLEASE MAKE CHECK PAYABLE TO THE KERN COUNTY CANCER FOUNDATION)

Please charge \$ to my Credit Card

Card Number: Exp. Date Security Code

Name on Card:

Billing Address (if different from above.):

Signature: Please Mail Completed registration form and payment to:

Kern County Cancer Foundation
6501 Truxtun Ave Bakersfield, CA 93309

ATTN: ALISSA TURNER
alissa@kerncountycancerfoundation.org

For sponsorship information please call 661- 825-8249



Stage/Music Sponsor

\$20,000

- Banner on Stage
- One team up to 50 people
- T-shirt included for registered team participants
- Logo on flyer
- 12'x12' vendor space, tent, table, chairs
- Four route signs
- Check presentation opportunity
- Logo on website
- Logo on event banner
- Logo/mention in all event communications
- Major recognition in event program
- Product placement in goodie bags

5k Course Sponsor

\$10,000

- Five Banners/route signs along course
- One team up to 40 people
- T-shirt included for registered team participants
- Logo on flyer
- 12'x12' vendor space
- Logo on website
- Logo on event banner
- Major recognition in event program
- Product placement in goodie bags

Survivor Sponsor

\$5,000

- Banners/yard sign at survivor tent
- One team up to 20 people
- T-shirt included for registered team participants
- Logo on flyer
- Logo on website
- Logo on event banner
- Recognition in event program
- Product placement in goodie bags

Children's Course Sponsor

\$2,500

- Banners/yard sign along Children's Course
- One team up to 10 people
- T-shirt included for registered team participants
- Logo on website
- Recognition in event program

Water Station Sponsor

\$1,000

- Banners/yard sign along 5K Course
- Table station along course
- Waters to hand out to participants
- Logo on website
- Recognition in event program

General Sponsor

\$500

- One team up to 10 people
- Logo on website
- Recognition in event program

Yard Sign Sponsor

\$250

- One 18"x24" at event
- Recognition in event program

Vendor

Small business/non-profit \$100

\$200 Business

\$300 Corporations

- Recognition in event program
- 12'x12' Vendor Booth

Message Board

\$50

Survivor or In memory of 18"x24" Yard Sign

- Have your loved ones photo displayed with a brief message of 100 words or less.
- Board will be placed along the 5K Course.



HOPE FIGHT HEAL

MESSAGE BOARD IN HONOR OF IN MEMORY OF



Make a \$50 minimum donation

**HAVE YOUR LOVED ONES PHOTO
DISPLAYED WITH A BRIEF MESSAGE
OF 100 WORDS OR LESS**

**THE 18"X24" BOARDS WILL BE
PLACED ALONG THE 5K COURSE AT
THE KERN CANCER RUN/WALK AND
FESTIVAL ON SEPT. 12, 2026 AT
RIVERWALK PARK. DEADLINE 8/30/26**

**LET'S SHOW THOSE WHO
ARE SURVIVING CANCER,
THEY ARE NOT ALONE!**

SEND PHOTO, MESSAGE AND DONATION TO ALISSA AT
ALISSA@KERNCOUNTYCANCERFOUNDATION.ORG
OR 6501 TRUXTUN AVE, BAKERSFIELD, CA 93309

PROCEEDS BENEFIT

Kern County
Cancer Foundation
Local support for local needs

